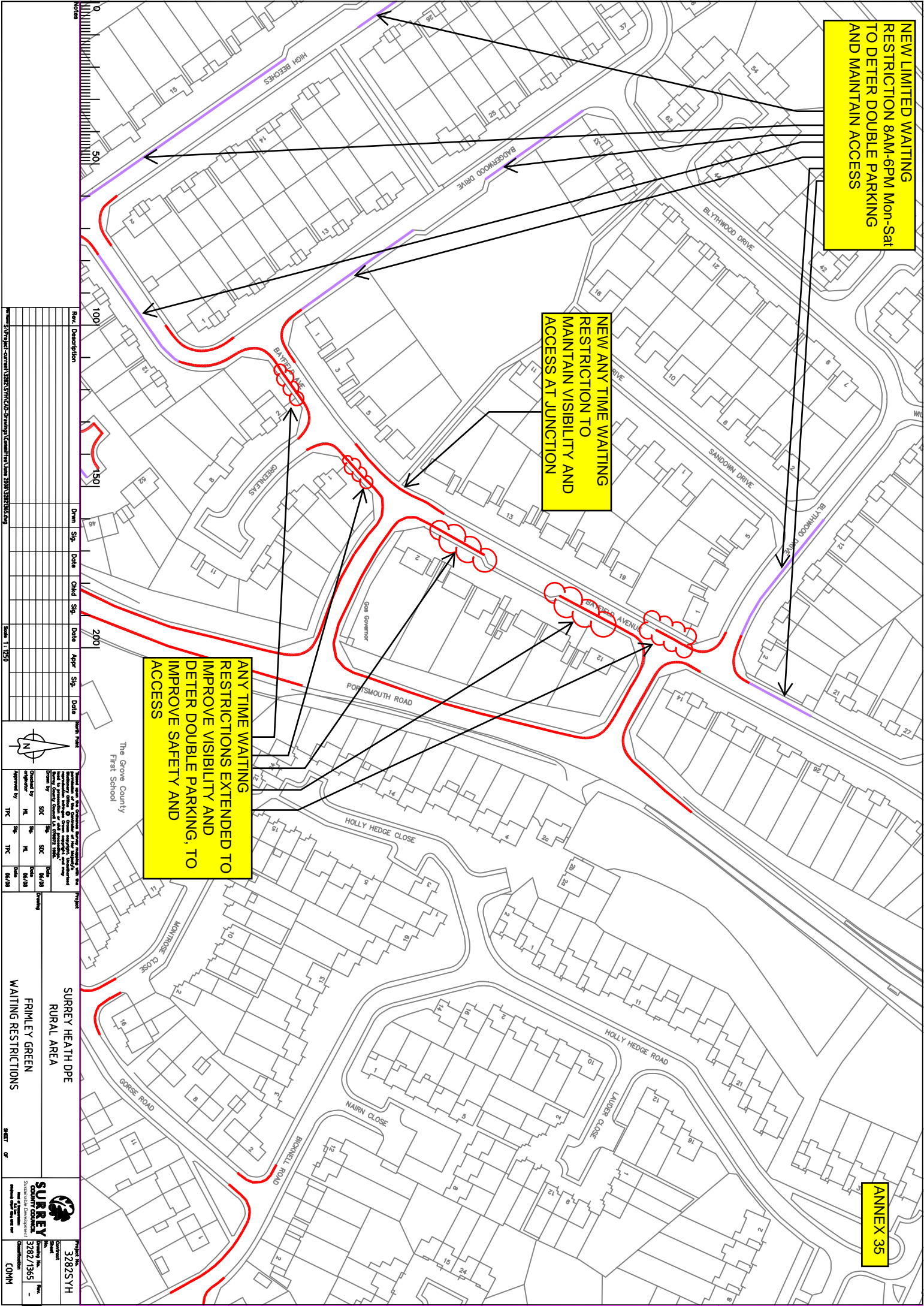


NEW LIMITED WAITING
RESTRICTION 8AM-6PM Mon-Sat
TO DETER DOUBLE PARKING
AND MAINTAIN ACCESS

NEW ANY TIME WAITING
RESTRICTION TO
MAINTAIN VISIBILITY AND
ACCESS AT JUNCTION

ANY TIME WAITING
RESTRICTIONS EXTENDED TO
IMPROVE VISIBILITY AND
DETER DOUBLE PARKING, TO
IMPROVE SAFETY AND
ACCESS

ANNEX 35



Row	Description	Drawn	Sig.	Date	Checked	Sig.	Date	Appr.	Sig.	Date	North Point
1											
2											
3											
4											
5											
6											
7											
8											
9											
10											
11											
12											
13											
14											
15											
16											
17											
18											
19											
20											
21											
22											
23											
24											
25											
26											
27											
28											
29											
30											
31											
32											
33											
34											
35											

Checked by	SJC	Date	04/08
Approved by	JHK	Date	04/08

SURREY HEATH DPE
RURAL AREA
FRIMLEY GREEN
WAITING RESTRICTIONS

Project No: 32825 YH
Contract No: 3282/1365
COMH